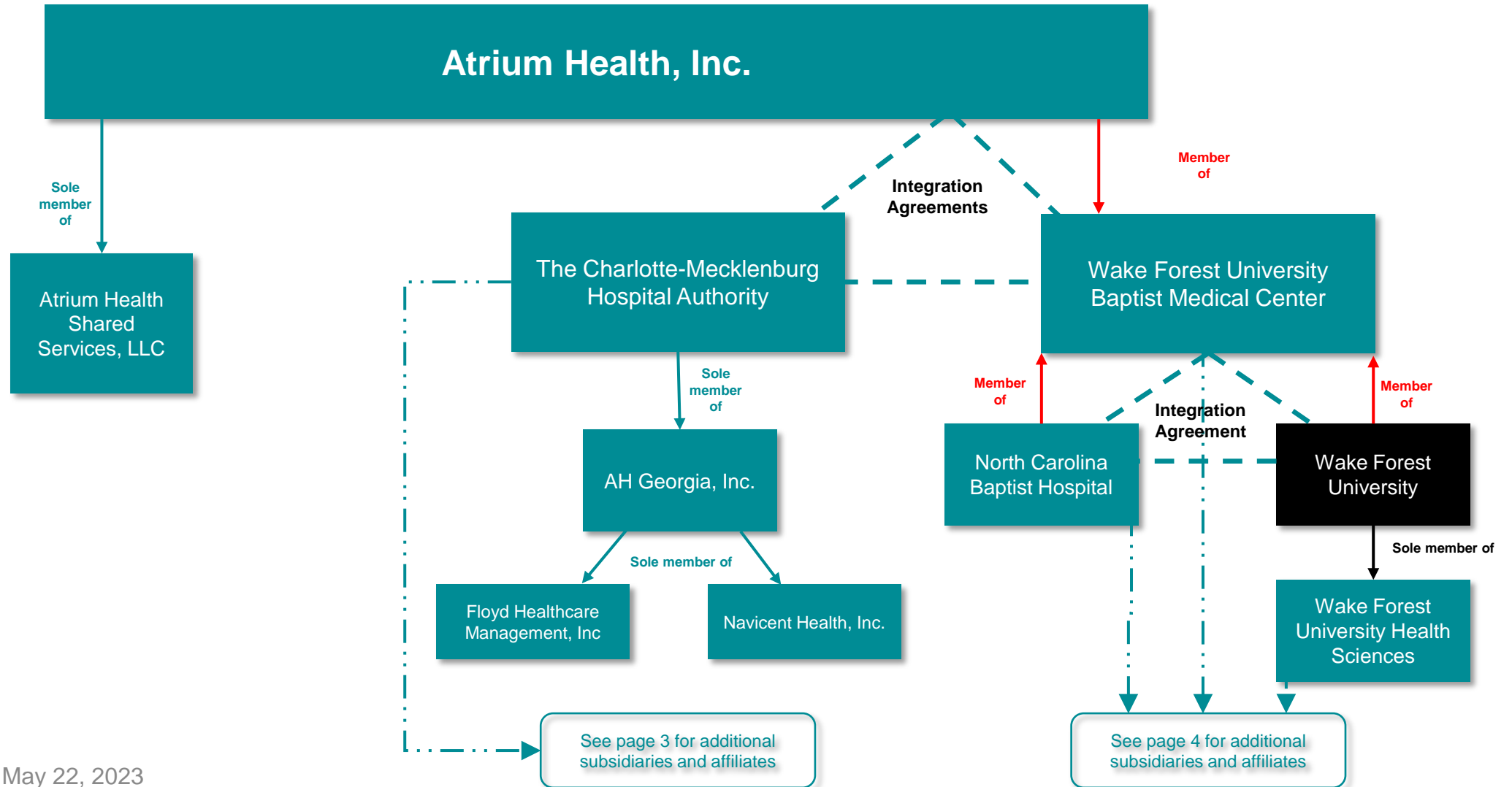


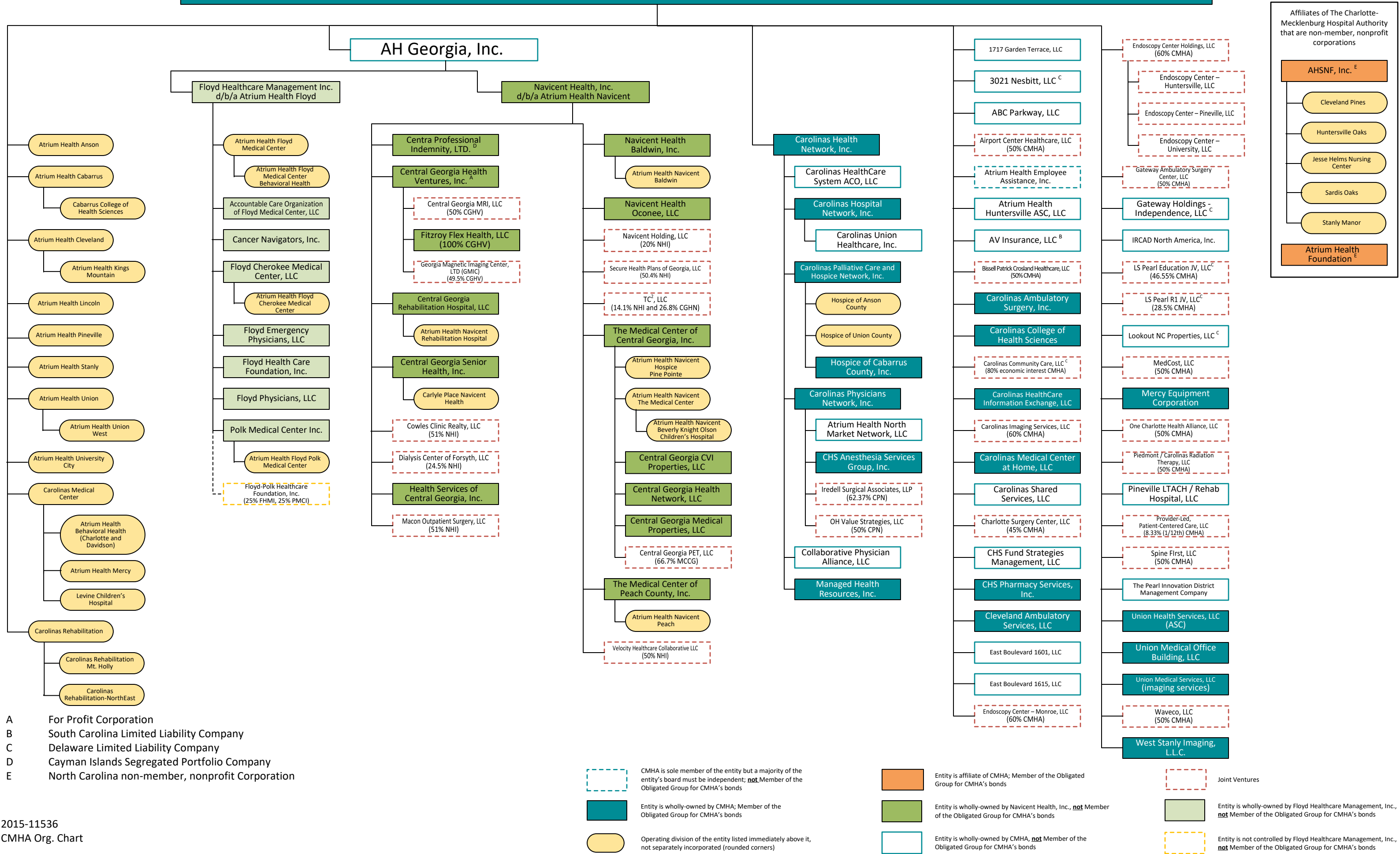
# Advocate Health Structure



# Atrium Health, Inc. Org Chart



# THE CHARLOTTE – MECKLENBURG HOSPITAL AUTHORITY



**Affiliates of The Charlotte-Mecklenburg Hospital Authority that are non-member, nonprofit corporations**

- AHSNF, Inc.<sup>E</sup>
  - Cleveland Pines
  - Huntersville Oaks
  - Jesse Helms Nursing Center
  - Sardis Oaks
  - Stanly Manor
- Atrium Health Foundation<sup>E</sup>

- A For Profit Corporation
- B South Carolina Limited Liability Company
- C Delaware Limited Liability Company
- D Cayman Islands Segregated Portfolio Company
- E North Carolina non-member, nonprofit Corporation

- CMHA is sole member of the entity but a majority of the entity's board must be independent; **not** Member of the Obligated Group for CMHA's bonds
- Entity is wholly-owned by CMHA; Member of the Obligated Group for CMHA's bonds
- Entity is wholly-owned by Navicent Health, Inc.; **not** Member of the Obligated Group for CMHA's bonds
- Entity is wholly-owned by Floyd Healthcare Management, Inc.; **not** Member of the Obligated Group for CMHA's bonds
- Joint Ventures
- Entity is affiliate of CMHA; Member of the Obligated Group for CMHA's bonds
- Entity is wholly-owned by CMHA; **not** Member of the Obligated Group for CMHA's bonds
- Entity is not controlled by Floyd Healthcare Management, Inc.; **not** Member of the Obligated Group for CMHA's bonds
- Operating division of the entity listed immediately above it, not separately incorporated (rounded corners)